

2009 Photo

2011 Long-Term Average Annual Erosion Rate Update at Outer Banks (Bodie Island), North Carolina

Legend

2011 Setback Factors (feet/year)	2003 Setback Factors (feet/year)
2.0	0.0 - 2.0
2.1 - 3.0	2.1 - 3.0
3.1 - 4.0	3.1 - 4.0
4.1 - 5.0	4.1 - 5.0
5.1 - 6.0	5.1 - 6.0
6.1 - 7.0	6.1 - 7.0
7.1 - 8.0	7.1 - 8.0
> 8.0	> 8.0

- - - - - Erosion Rate Factor Transition Boundary
 Beach Fill Project > 300,000 cubic yards
 Inlet Hazard Area
 Photo: 2009 USDA NAIP

Vicinity Map

Legend

Counties (CAMA Jurisdiction)

Map Scale: 1:24,000

Horizontal Datum: NC State Plane NAD 83 Feet

0 1,000 2,000 4,000 Feet

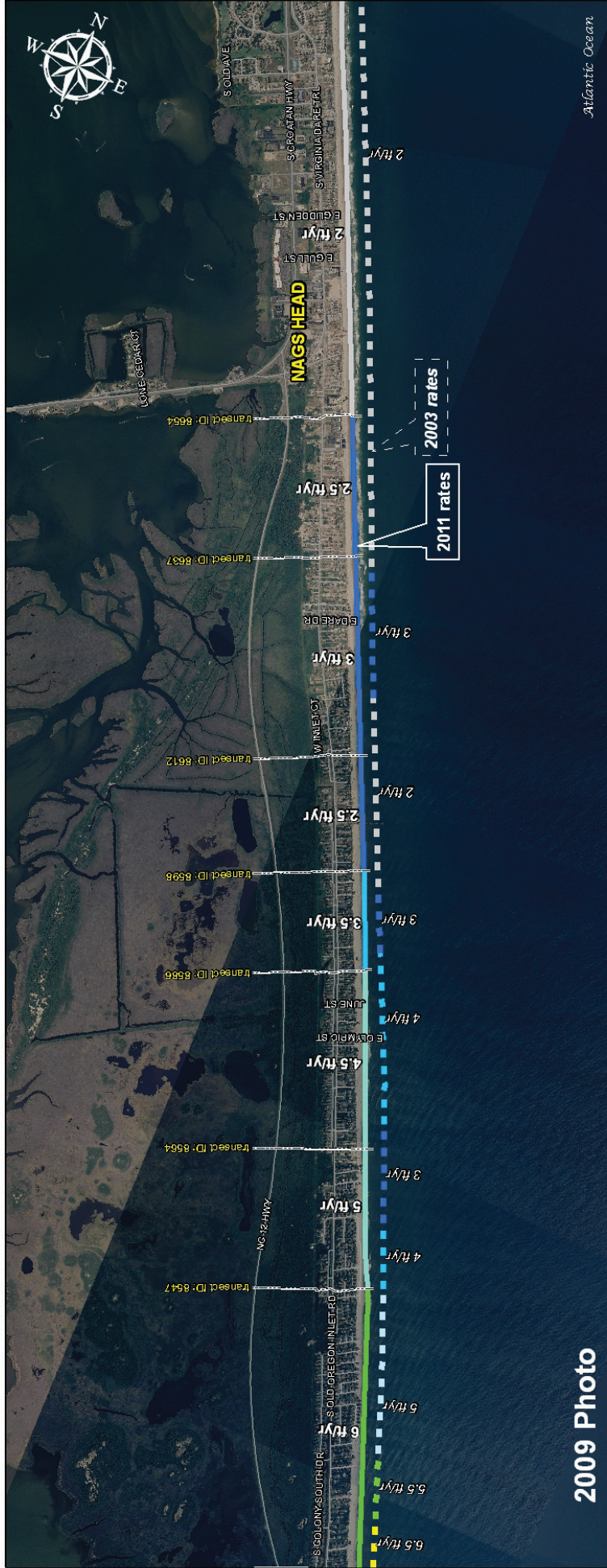
0 0.25 0.5 1 Miles

Setback Factors on this map represents long-term average annual erosion rates measured in feet per year. Shoreline segments that are accreting or have erosion rates less than two feet per year receive a setback factor value equal to two.

The information presented here is not predictive, nor does it reflect short-term erosion potential. This map may not be suitable for property specific determination of erosion rate factors near rate transition boundaries due to its small scale. For site specific determinations contact your CAMA Local Permit Official, or regional Division of Coastal Management field office.

400 Commerce Avenue
Morehead City, North Carolina 28557
1-888-4RCOAST
<http://www.nccoastalmanagement.net>

Map No. Bodie Island - 1 of 1



2011 Long-Term Average Annual Erosion Rate Update at Outer Banks (Nags Head), North Carolina

Legend

	2011 Setback Factors (feet/year)		2003 Setback Factors (feet/year)
	2.0		0.0 - 2.0
	2.1 - 3.0		2.1 - 3.0
	3.1 - 4.0		3.1 - 4.0
	4.1 - 5.0		4.1 - 5.0
	5.1 - 6.0		5.1 - 6.0
	6.1 - 7.0		6.1 - 7.0
	7.1 - 8.0		7.1 - 8.0
	> 8.0		> 8.0

Erosion Rate Factor Transition Boundary
 Beach Fill Project > 300,000 cubic yards
 Inlet Hazard Area

Photo: 2009 USDA NAIP

Vicinity Map

Legend

Counties (CMAA Jurisdiction)

Map Scale: 1:24,000

0 1,000 2,000 4,000 Feet

0 0.25 0.5 1 Miles

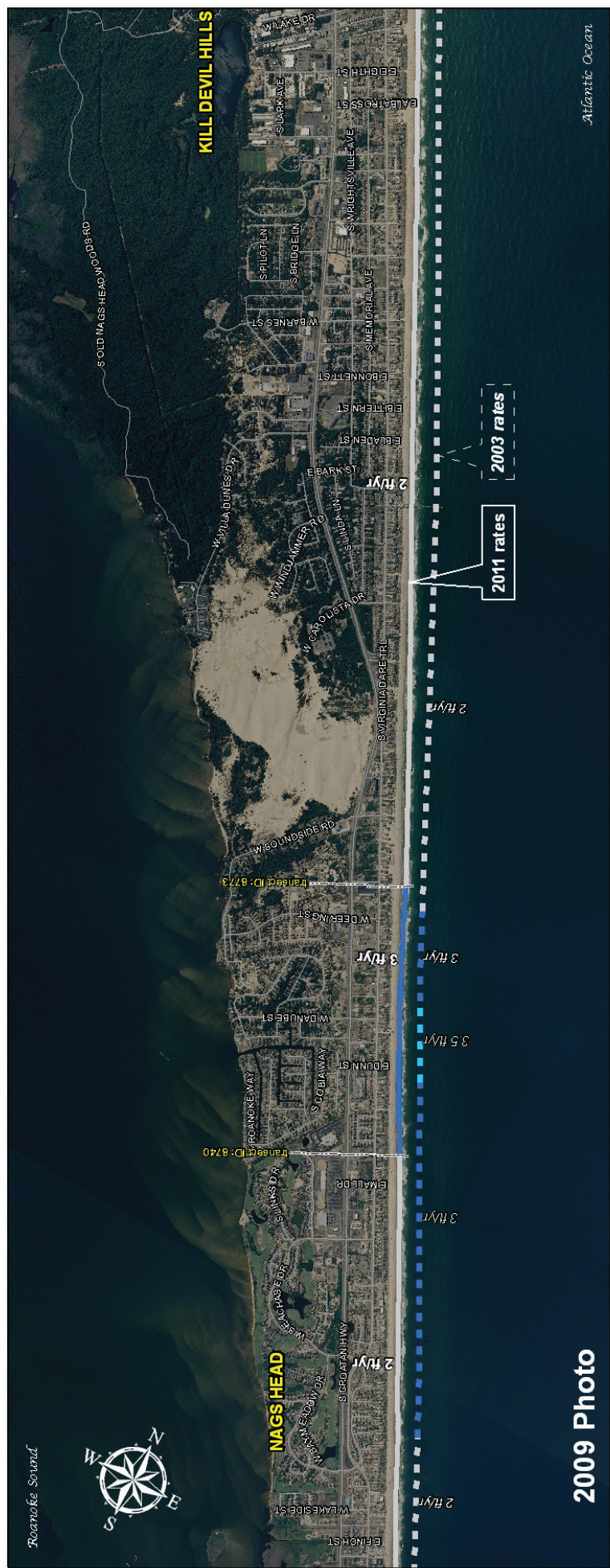
Horizontal Datum: NC State Plane NAD 83 Feet

Setback Factors on this map represents long-term average annual erosion rates measured in feet per year. Shoreline segments that are accreting or have erosion rates less than two feet per year receive a setback factor value equal to two.

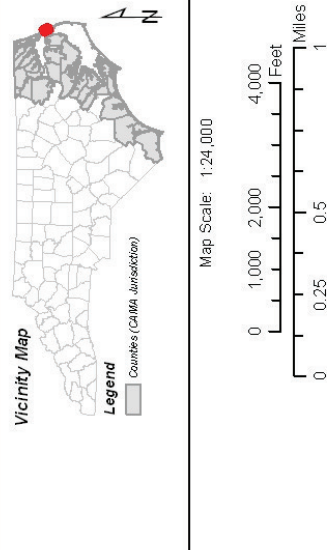
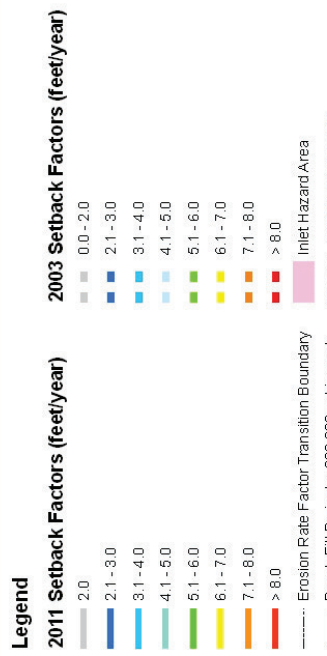
The information presented here is not predictive, nor does it reflect short-term erosion potential. This map may not be suitable for property specific determination of erosion rate factors near rate transition boundaries due to its small scale. For site specific determinations contact your CAMA Local Permit Official, or regional Division of Coastal Management field office.

400 Commerce Avenue
 Morehead City, North Carolina 28557
 1-888-4RCOAST
<http://www.nccoastalmanagement.net>

Map No. Nags Head - 1 of 1



2011 Long-Term Average Annual Erosion Rate Update at Outer Banks (Nags Head & Kill Devil Hills), North Carolina



Setback Factors on this map represents long-term average annual erosion rates measured in feet per year. Shoreline segments that are accreting or have erosion rates less than two feet per year receive a setback factor value equal to two.

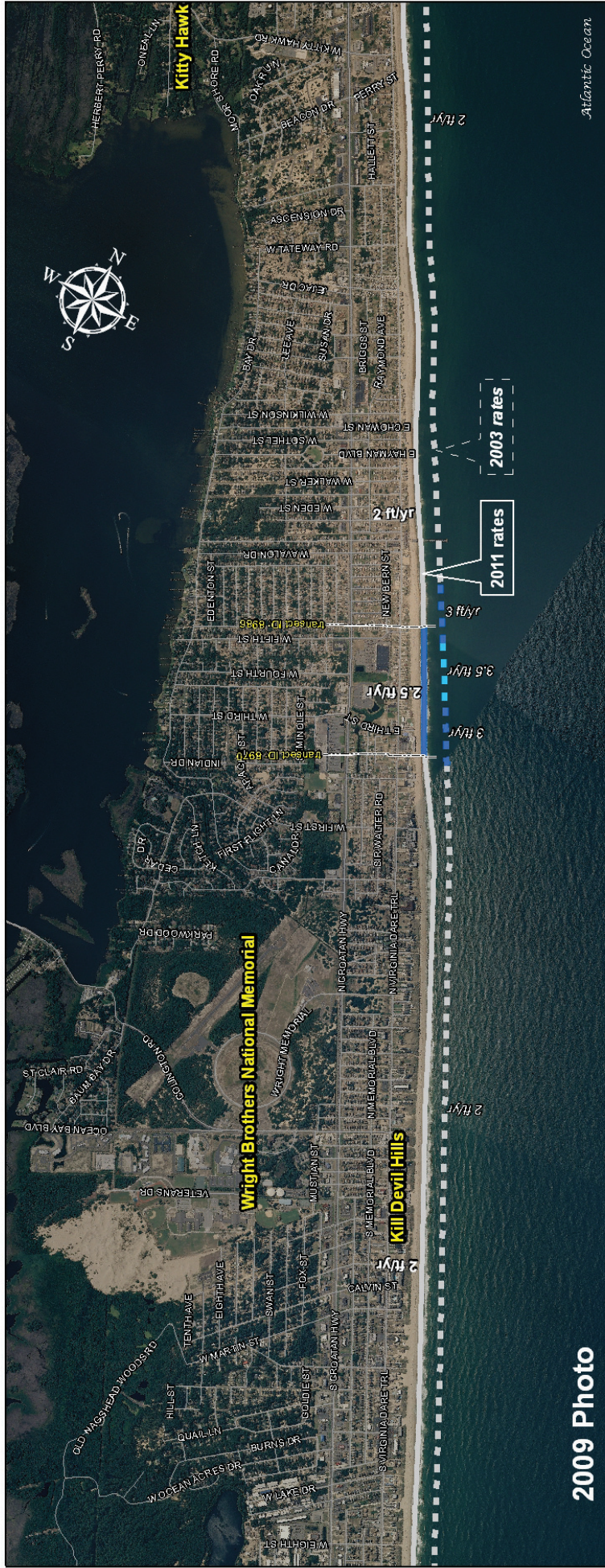
The information presented here is not predictive, nor does it reflect short-term erosion potential. This map may not be suitable for property specific determination of erosion rate factors near rate transition boundaries due to its small scale. For site specific determinations contact your CAMA Local Permit Official, or regional Division of Coastal Management field office.



400 Commerce Avenue
 Morehead City, North Carolina 28557
 1-888-4RCOAST

<http://www.nccoastalmanagement.net>

Map No. Nags Head - KDH - 1 of 1



2009 Photo

Atlantic Ocean

2011 Long-Term Average Annual Erosion Rate Update at Outer Banks (Kill Devil Hills), North Carolina

Legend

	2011 Setback Factors (feet/year)		2003 Setback Factors (feet/year)
	Erosion Rate Factor Transition Boundary		Inlet Hazard Area
	Beach Fill Project > 300,000 cubic yards		Photo: 2009 USDA NAIP

Vicinity Map

Map Scale: 1:24,000

Horizontal Datum: NC State Plane NAD 83 Feet

Scale: 0 to 4,000 Feet / 0 to 1 Miles

Setback Factors on this map represents long-term average annual erosion rates measured in feet per year. Shoreline segments that are accreting or have erosion rates less than two feet per year receive a setback factor value equal to two.

The information presented here is not predictive, nor does it reflect short-term erosion potential. This map may not be suitable for property specific determination of erosion rate factors near rate transition boundaries due to its small scale. For site specific determinations contact your CAMA Local Permit Official, or regional Division of Coastal Management field office.



400 Commerce Avenue
Morehead City, North Carolina 28557
1-888-4RCOAST

<http://www.nccoastalmanagement.net>

Map No. Kill Devil Hills - 1 of 1



2009 Photo

2011 Long-Term Average Annual Erosion Rate Update at Outer Banks (Kitty Hawk), North Carolina

Legend

2011 Setback Factors (feet/year)	2003 Setback Factors (feet/year)
2.0	0.0 - 2.0
2.1 - 3.0	2.1 - 3.0
3.1 - 4.0	3.1 - 4.0
4.1 - 5.0	4.1 - 5.0
5.1 - 6.0	5.1 - 6.0
6.1 - 7.0	6.1 - 7.0
7.1 - 8.0	7.1 - 8.0
> 8.0	> 8.0

- - - - - Erosion Rate Factor Transition Boundary
 Beach Fill Project > 300,000 cubic yards
 Inlet Hazard Area
 Photo: 2009 USDA NAIP

Vicinity Map

Legend

Counties (CAMA Jurisdiction)

Map Scale: 1:20,000

Horizontal Datum: NC State Plane NAD 83 Feet

0 1,000 2,000 4,000 Feet

0 0.25 0.5 1 Miles

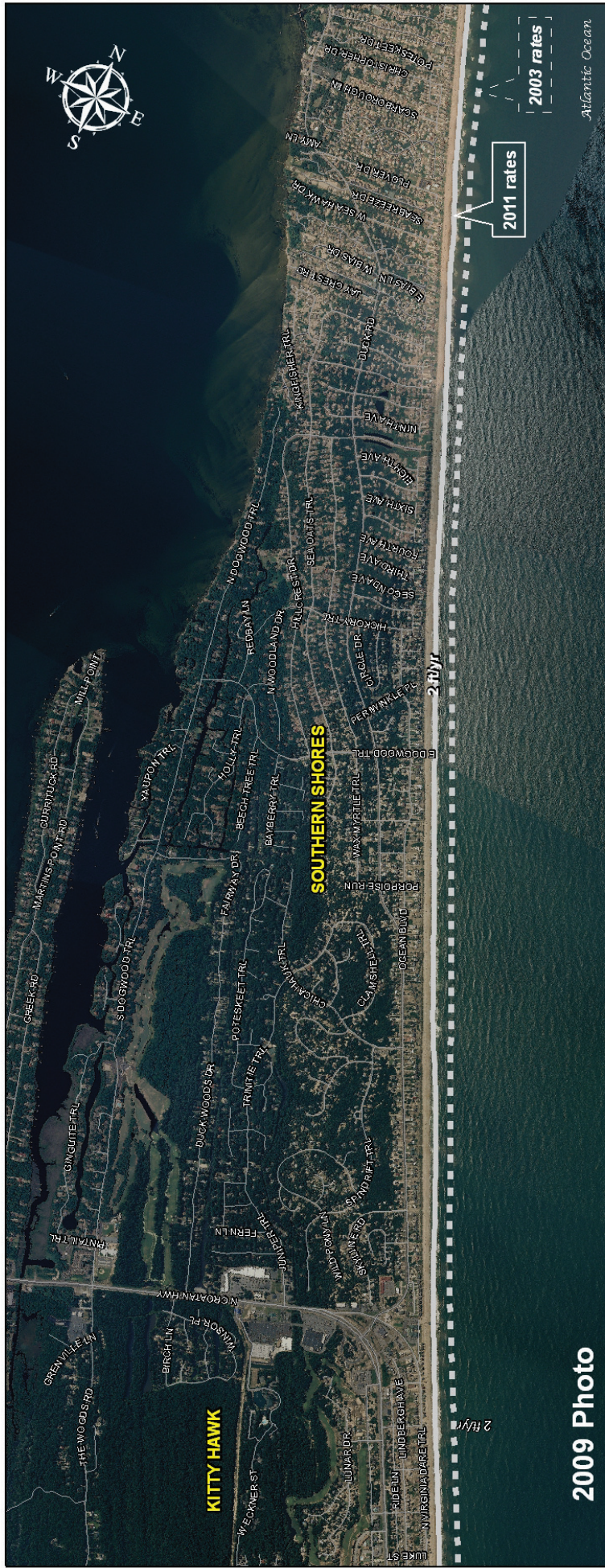
Setback Factors on this map represents long-term average annual erosion rates measured in feet per year. Shoreline segments that are accreting or have erosion rates less than two feet per year receive a setback factor value equal to two.

The information presented here is not predictive, nor does it reflect short-term erosion potential. This map may not be suitable for property specific determination of erosion rate factors near rate transition boundaries due to its small scale. For site specific determinations contact your CAMA Local Permit Official, or regional Division of Coastal Management field office.

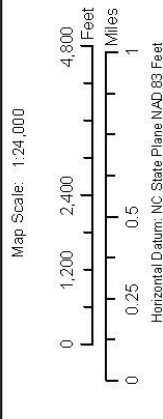
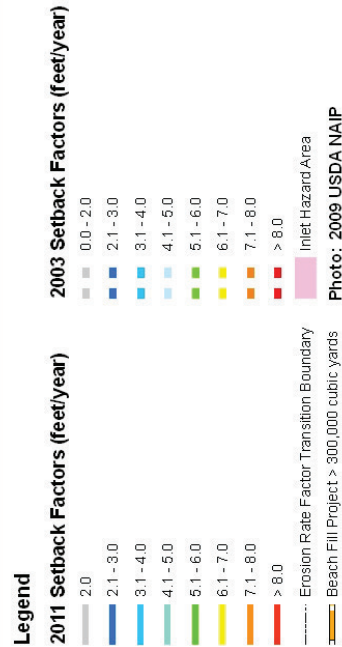


400 Commerce Avenue
 Morehead City, North Carolina 28557
 1-888-4RCOAST
<http://www.nccoastmanagement.net>

Map No. Kitty Hawk - 1 of 1



2011 Long-Term Average Annual Erosion Rate Update at Outer Banks (Southern Shores), North Carolina



Setback Factors on this map represents long-term average annual erosion rates measured in feet per year. Shoreline segments that are accreting or have erosion rates less than two feet per year receive a setback factor value equal to two.

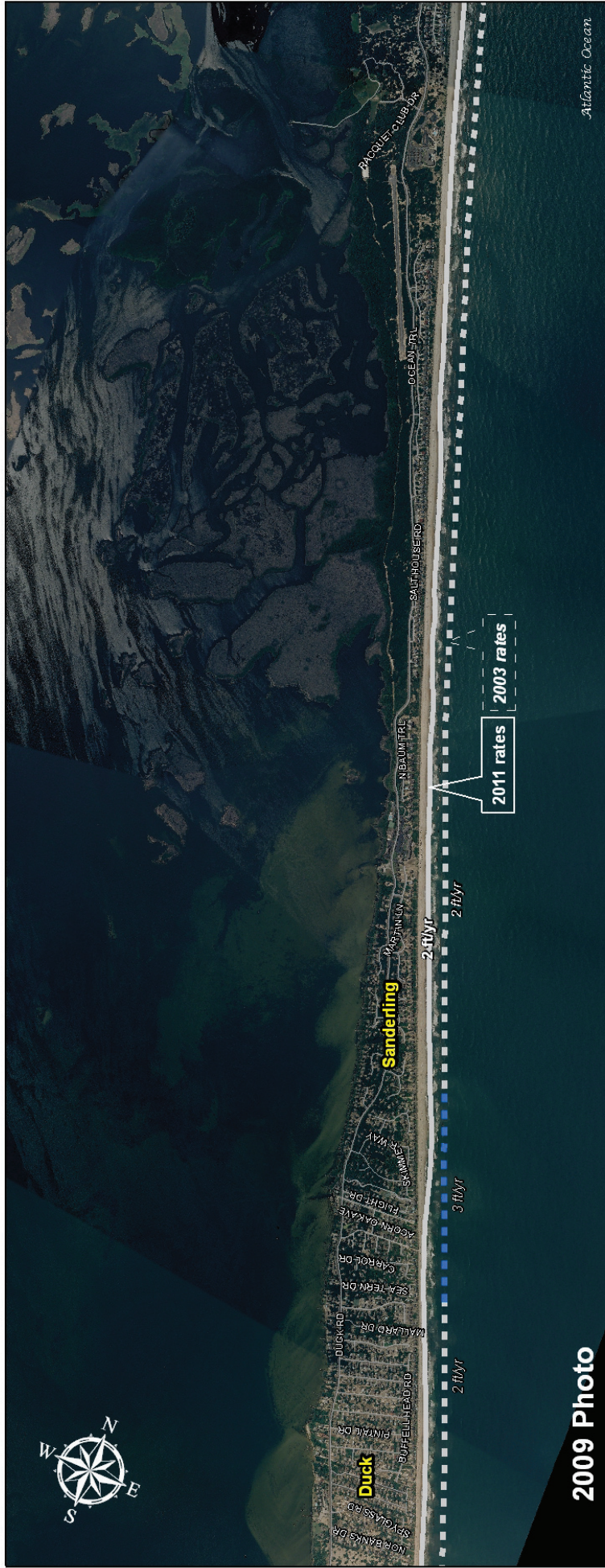
The information presented here is not predictive, nor does it reflect short-term erosion potential. This map may not be suitable for property specific determination of erosion rate factors near rate transition boundaries due to its small scale. For site specific determinations contact your CAMA Local Permit Official, or regional Division of Coastal Management field office.



400 Commerce Avenue
Morehead City, North Carolina 28557
1-888-4RCOAST

<http://www.nccoastalmanagement.net>

Map No. Southern Shores - 1 of 2



2009 Photo

2011 Long-Term Average Annual Erosion Rate Update at Outer Banks (Duck), North Carolina

Legend

2011 Setback Factors (feet/year)	2003 Setback Factors (feet/year)
2.0	0.0 - 2.0
2.1 - 3.0	2.1 - 3.0
3.1 - 4.0	3.1 - 4.0
4.1 - 5.0	4.1 - 5.0
5.1 - 6.0	5.1 - 6.0
6.1 - 7.0	6.1 - 7.0
7.1 - 8.0	7.1 - 8.0
> 8.0	> 8.0

- - - - - Erosion Rate Factor Transition Boundary
 Beach Fill Project > 300,000 cubic yards
 Inlet Hazard Area
 Photo: 2009 USDA NAIP

Vicinity Map

Legend
Counties (CAMA Jurisdiction)

Map Scale: 1:24,000

Horizontal Datum: NC State Plane NAD 83 Feet

0 1,000 2,000 4,000 Feet
0 0.25 0.5 1 Miles

Setback Factors on this map represents long-term average annual erosion rates measured in feet per year. Shoreline segments that are accreting or have erosion rates less than two feet per year receive a setback factor value equal to two.

The information presented here is not predictive, nor does it reflect short-term erosion potential. This map may not be suitable for property specific determination of erosion rate factors near rate transition boundaries due to its small scale. For site specific determinations contact your CAMA Local Permit Official, or regional Division of Coastal Management field office.



400 Commerce Avenue
Morehead City, North Carolina 28557
1-888-4RCOAST

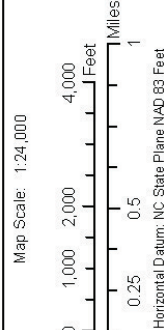
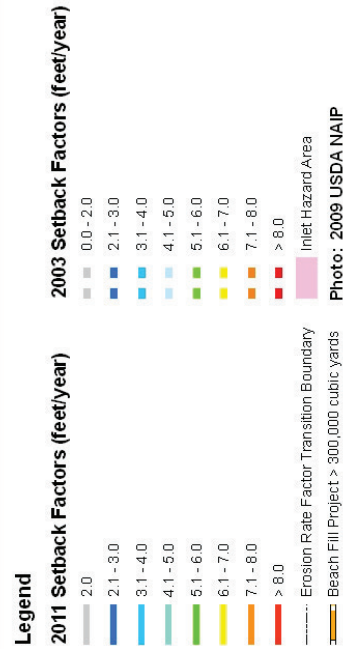
<http://www.nccoastalmanagement.net>

Map No. Duck - 1 of 1



2009 Photo

2011 Long-Term Average Annual Erosion Rate Update at Outer Banks (Corolla), North Carolina



Setback Factors on this map represents long-term average annual erosion rates measured in feet per year. Shoreline segments that are accreting or have erosion rates less than two feet per year receive a setback factor value equal to two.

The information presented here is not predictive, nor does it reflect short-term erosion potential. This map may not be suitable for property specific determination of erosion rate factors near rate transition boundaries due to its small scale. For site specific determinations contact your CAMA Local Permit Official, or regional Division of Coastal Management field office.



400 Commerce Avenue
Morehead City, North Carolina 28557
1-888-4RCOAST

<http://www.nccoastalmanagement.net>

Map No. Corolla - 1 of 2