

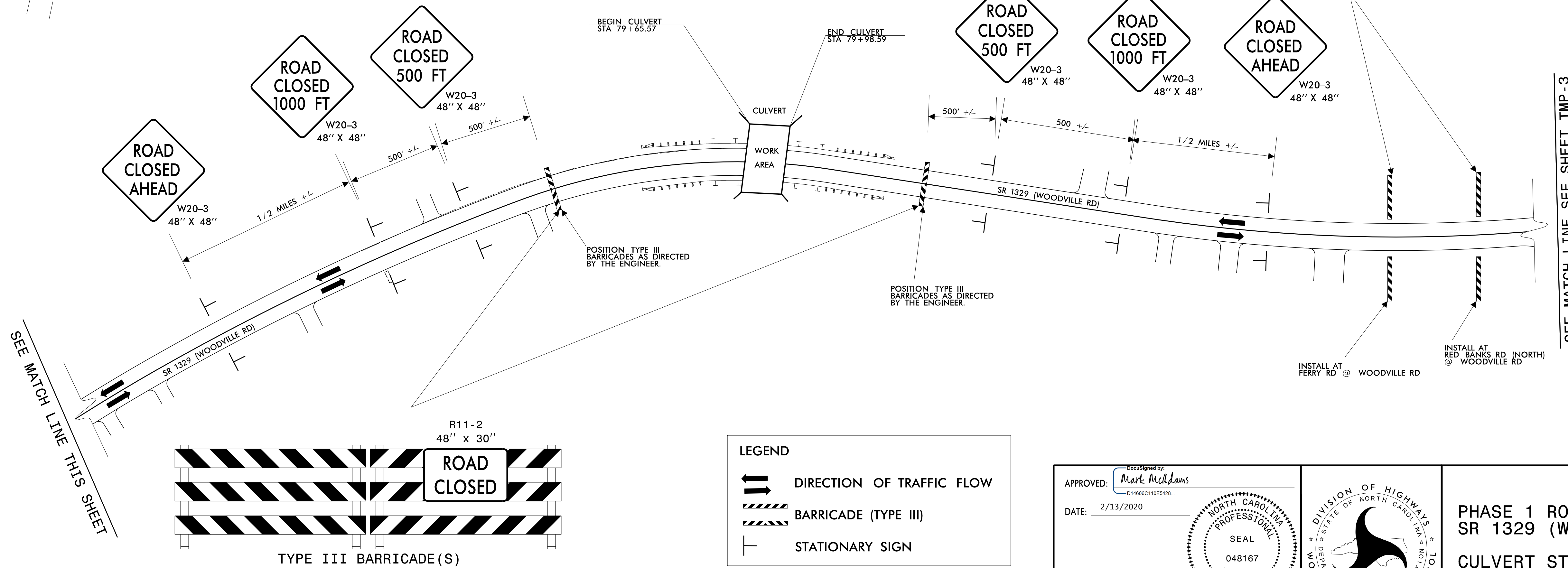
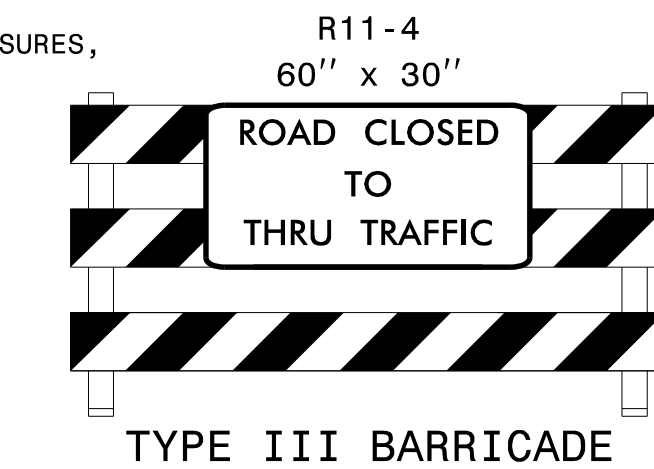
ROADWAY STANDARD DRAWINGS:

THE FOLLOWING ROADWAY STANDARDS AS SHOWN IN "ROADWAY STANDARD DRAWINGS" - N.C. DEPARTMENT OF TRANSPORTATION - RALEIGH, N.C., DATED JANUARY 2018 ARE APPLICABLE TO THIS PROJECT AND BY REFERENCE HEREBY ARE CONSIDERED A PART OF THESE PLANS:

STD. NO.	TITLE
1101.01	WORK ZONE WARNING SIGNS
1101.02	TEMPORARY LANE CLOSURES
1101.03	TEMPORARY ROAD CLOSURES
1101.04	TEMPORARY SHOULDER CLOSURES
1101.11	TRAFFIC CONTROL DESIGN TABLES
1110.01	STATIONARY WORK ZONE SIGNS
1130.01	DRUMS
1135.01	CONES
1145.01	BARRICADES
1150.01	FLAGGERS
1180.01	SKINNY DRUMS

GENERAL NOTES:

- INSTALLATION OF TEMPORARY ROUTE MARKERS, DESTINATION SIGNS, AND ANY NECESSARY MODIFICATIONS TO EXISTING OR PROPOSED REGULATORY OR WARNING SIGNS WILL BE MADE BY OTHERS (STATE OR TOWN FORCES) UNLESS OTHERWISE DESIGNATED IN PLANS. PROVIDE A MINIMUM 21 CALENDAR DAY NOTICE TO STATE FORCES BEFORE A ROADWAY IS CLOSED TO TRAFFIC SUCH THAT THE NECESSARY PROVISIONS CAN BE MADE TO INFORM LOCAL EMERGENCY AND LAW ENFORCEMENT PERSONNEL, SCHOOLS OR ANY OTHER PARTIES AFFECTED BY THE ROAD CLOSURE.
- INSTALL SIGNS BEFORE THE BARRICADES WHEN CLOSING THE ROADWAY TO TRAFFIC. REMOVE BARRICADES BEFORE SIGNS WHEN OPENING THE ROADWAY TO TRAFFIC. INSTALL/REMOVE SIGNS AND BARRICADES WITHIN THE SAME CALENDAR DAY.
- POSITION WING BARRICADES ON THE SHOULDERS AND SLOPE THE STRIPES DOWNWARD IN THE DIRECTION TOWARD WHICH TRAFFIC MUST TURN ON DETOURING.
- USE ADDITIONAL TYPE III BARRICADES IN STAGGERED LOCATIONS SUPPLEMENTED WITH SIGN R11-4 "ROAD CLOSED TO THRU TRAFFIC" IN THE EVENT THAT TRAFFIC MUST BE MAINTAINED BEYOND THE DETOUR POINT.
- SEE ROADWAY STANDARD DRAWING 1101.03, SHEET 1 OF 9, FOR TEMPORARY ROAD CLOSURE.
- PROPOSED WORK NOT RELATED TO CULVERT CONSTRUCTION TO BE PERFORMED USING LANE OR SHOULDER CLOSURES, IF WARRANTED, PER APPLICABLE STANDARDS.



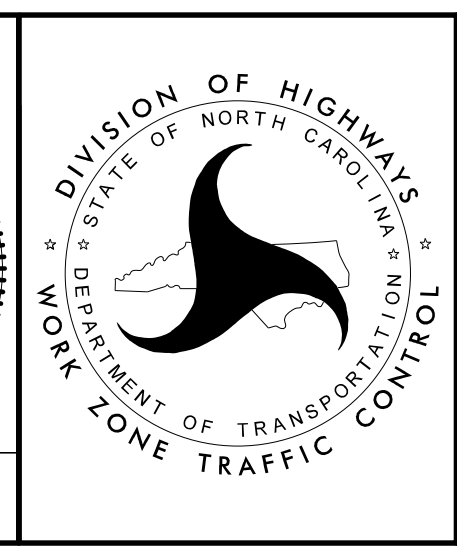
LEGEND	
	DIRECTION OF TRAFFIC FLOW
	BARRICADE (TYPE III)
	STATIONARY SIGN

APPROVED: *Mark McAdams*
 DATE: 2/13/2020

DocuSigned by:
 Mark D. McAdams
 D14600C110E5428...

SEAL
 048167
 ENGINEER
 MARK D. MCADAMS

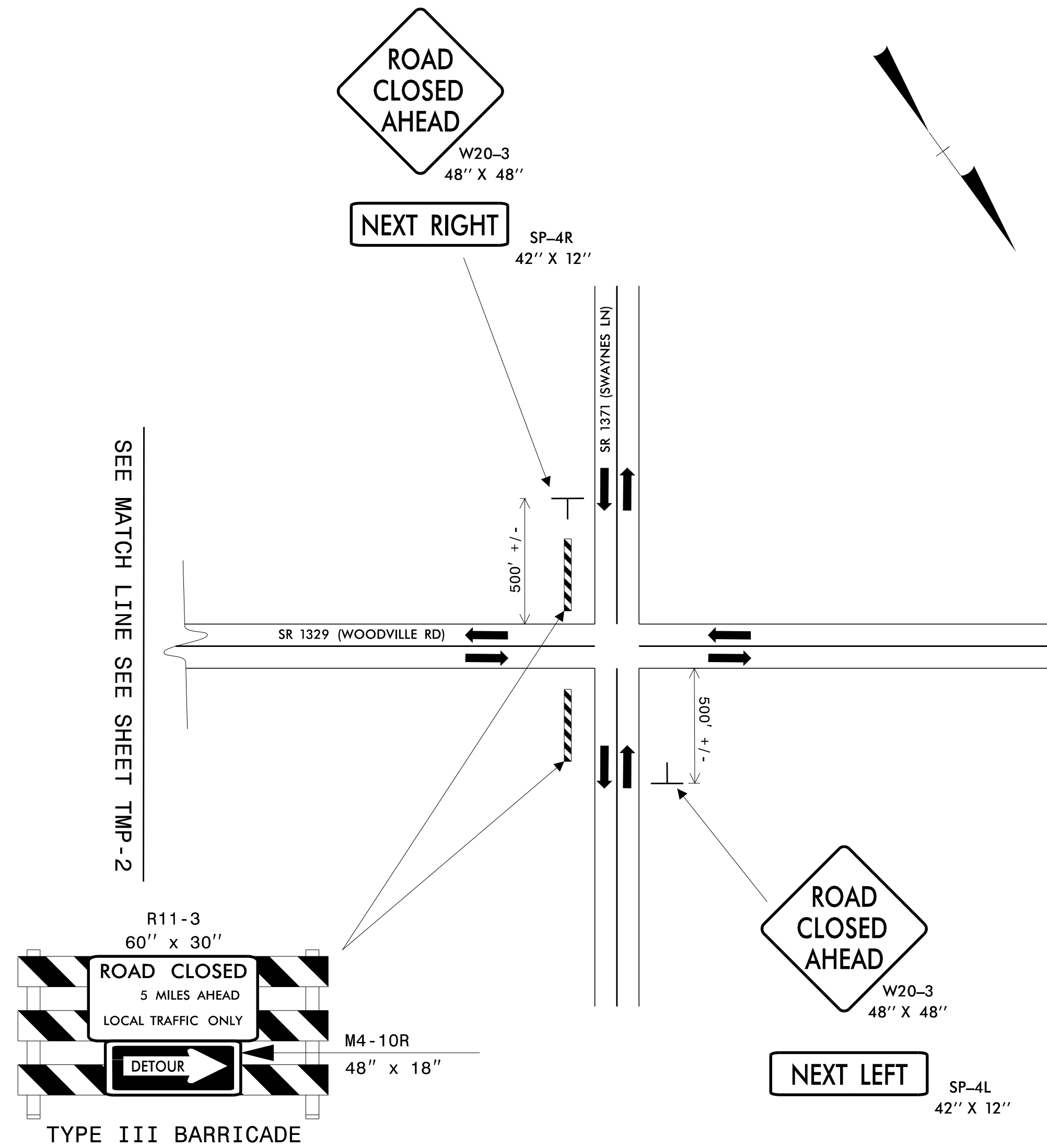
**DOCUMENT NOT CONSIDERED FINAL
 UNLESS ALL SIGNATURES COMPLETED**



**PHASE 1 ROAD CLOSURE
 SR 1329 (WOODVILLE ROAD)**

**CULVERT STA 79+65.57
 TO STA 79+98.59**

2/13/2020
 G:\Transportation\Roadway\NCDOT\Division01\NR-5740\Traffic\R5740 TMP.dgn
 User:ACEV7019



ROADWAY STANDARD DRAWINGS:

THE FOLLOWING ROADWAY STANDARDS AS SHOWN IN "ROADWAY STANDARD DRAWINGS" - N.C. DEPARTMENT OF TRANSPORTATION - RALEIGH, N.C., DATED JANUARY 2018 ARE APPLICABLE TO THIS PROJECT AND BY REFERENCE HEREBY ARE CONSIDERED A PART OF THESE PLANS:

STD. NO.	TITLE
1101.01	WORK ZONE WARNING SIGNS
1101.02	TEMPORARY LANE CLOSURES
1101.03	TEMPORARY ROAD CLOSURES
1101.04	TEMPORARY SHOULDER CLOSURES
1101.11	TRAFFIC CONTROL DESIGN TABLES
1110.01	STATIONARY WORK ZONE SIGNS
1130.01	DRUMS
1135.01	CONES
1145.01	BARRICADES
1150.01	FLAGGERS
1180.01	SKINNY DRUMS

GENERAL NOTES:

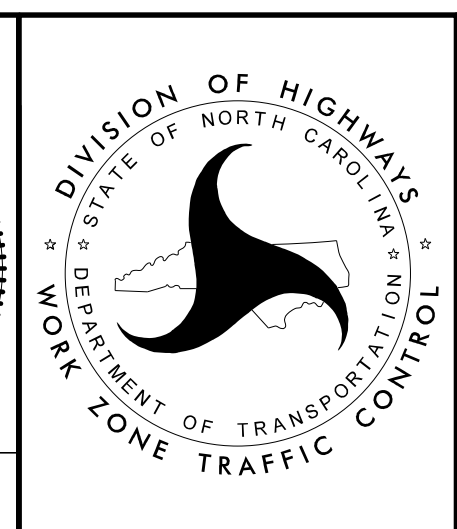
- INSTALLATION OF TEMPORARY ROUTE MARKERS, DESTINATION SIGNS, AND ANY NECESSARY MODIFICATIONS TO EXISTING OR PROPOSED REGULATORY OR WARNING SIGNS WILL BE MADE BY OTHERS (STATE OR TOWN FORCES) UNLESS OTHERWISE DESIGNATED IN PLANS. PROVIDE A MINIMUM 21 CALENDAR DAY NOTICE TO STATE FORCES BEFORE A ROADWAY IS CLOSED TO TRAFFIC SUCH THAT THE NECESSARY PROVISIONS CAN BE MADE TO INFORM LOCAL EMERGENCY AND LAW ENFORCEMENT PERSONNEL, SCHOOLS OR ANY OTHER PARTIES AFFECTED BY THE ROAD CLOSURE.
- INSTALL SIGNS BEFORE THE BARRICADES WHEN CLOSING THE ROADWAY TO TRAFFIC. REMOVE BARRICADES BEFORE SIGNS WHEN OPENING THE ROADWAY TO TRAFFIC. INSTALL/REMOVE SIGNS AND BARRICADES WITHIN THE SAME CALENDAR DAY.
- POSITION WING BARRICADES ON THE SHOULDERS AND SLOPE THE STRIPES DOWNWARD IN THE DIRECTION TOWARD WHICH TRAFFIC MUST TURN ON DETOURING.
- USE ADDITIONAL TYPE III BARRICADES IN STAGGERED LOCATIONS SUPPLEMENTED WITH SIGN R11-4 "ROAD CLOSED TO THRU TRAFFIC" IN THE EVENT THAT TRAFFIC MUST BE MAINTAINED BEYOND THE DETOUR POINT.
- SEE ROADWAY STANDARD DRAWING 1101.03, SHEET 1 OF 9, FOR TEMPORARY ROAD CLOSURE.
- PROPOSED WORK NOT RELATED TO CULVERT CONSTRUCTION TO BE PERFORMED USING LANE OR SHOULDER CLOSURES, IF WARRANTED, PER APPLICABLE STANDARDS.

LEGEND	
	DIRECTION OF TRAFFIC FLOW
	BARRICADE (TYPE III)
	STATIONARY SIGN

APPROVED: *Mark McAdams*
 DATE: 2/13/2020

SEAL
 048167
 ENGINEER
 MARK D. MCAIDAMS

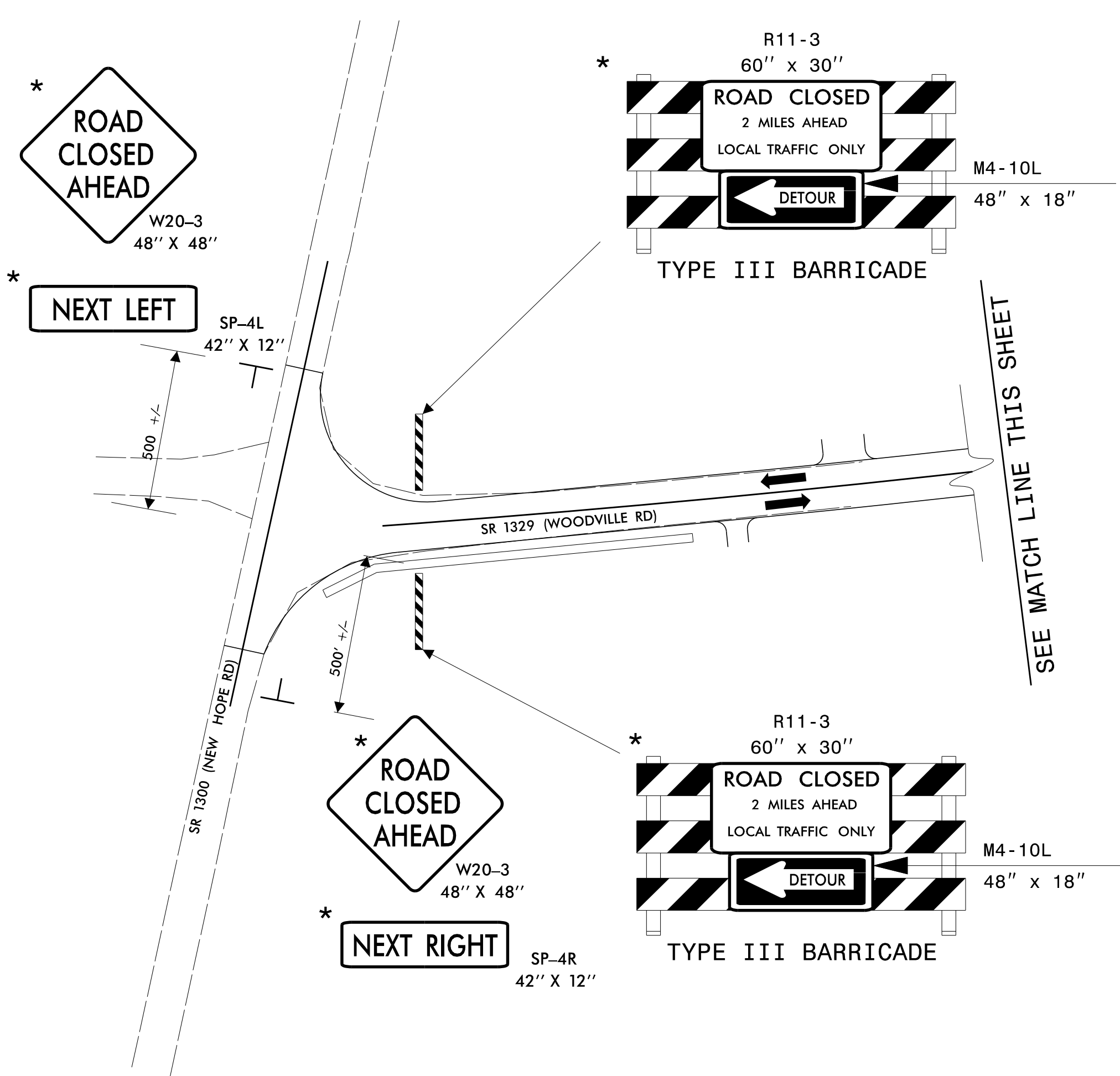
**DOCUMENT NOT CONSIDERED FINAL
 UNLESS ALL SIGNATURES COMPLETED**



PHASE 1 ROAD CLOSURE
 SR 1329 (WOODVILLE ROAD)

CULVERT STA 79+65.57
 TO STA 79+98.59

2/13/2020
 G:\Transportation\Roadway\NCDOT\Division01\NR-5740\Traffic\R5740 TMP.dgn
 User:ACEV7019



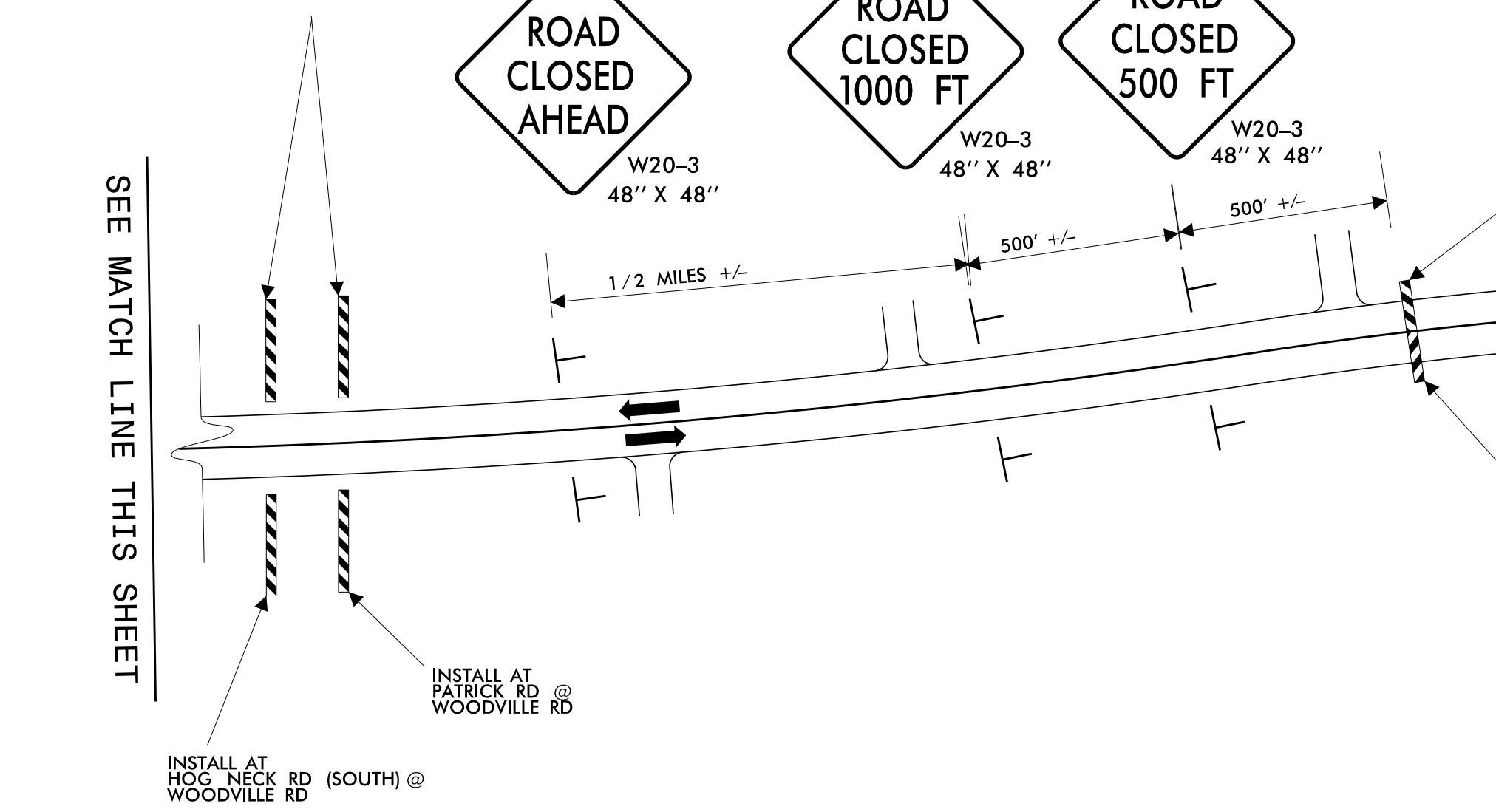
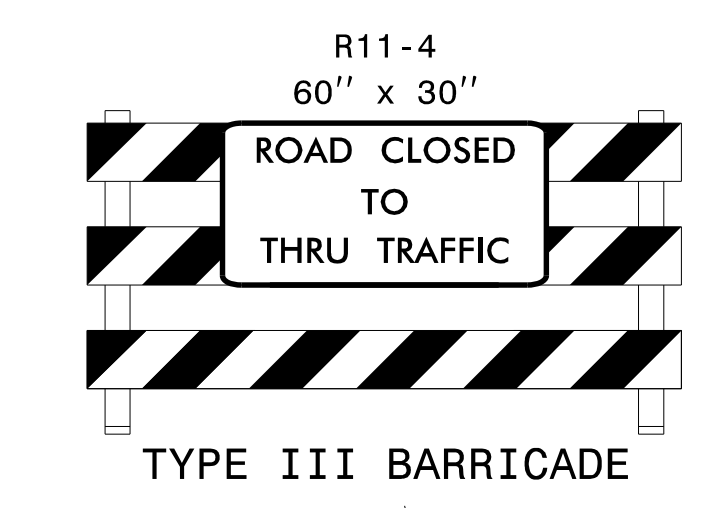
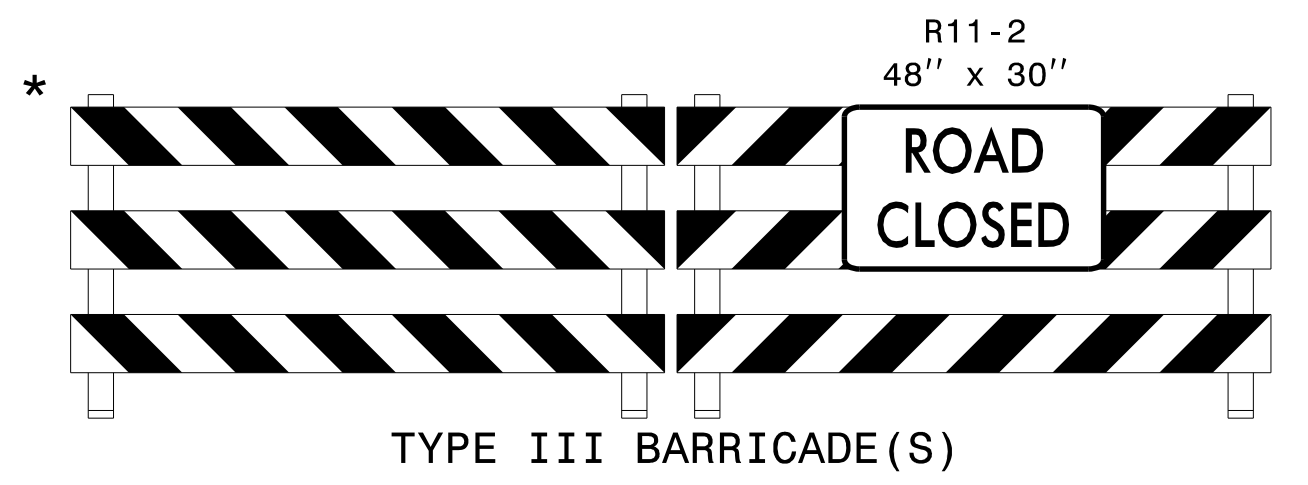
ROADWAY STANDARD DRAWINGS:

THE FOLLOWING ROADWAY STANDARDS AS SHOWN IN "ROADWAY STANDARD DRAWINGS" - N.C. DEPARTMENT OF TRANSPORTATION - RALEIGH, N.C., DATED JANUARY 2018 ARE APPLICABLE TO THIS PROJECT AND BY REFERENCE HEREBY ARE CONSIDERED A PART OF THESE PLANS:

STD. NO.	TITLE
1101.01	WORK ZONE WARNING SIGNS
1101.02	TEMPORARY LANE CLOSURES
1101.03	TEMPORARY ROAD CLOSURES
1101.04	TEMPORARY SHOULDER CLOSURES
1101.11	TRAFFIC CONTROL DESIGN TABLES
1110.01	STATIONARY WORK ZONE SIGNS
1130.01	DRUMS
1135.01	CONES
1145.01	BARRICADES
1150.01	FLAGGERS
1180.01	SKINNY DRUMS

GENERAL NOTES:

1. INSTALLATION OF TEMPORARY ROUTE MARKERS, DESTINATION SIGNS, AND ANY NECESSARY MODIFICATIONS TO EXISTING OR PROPOSED REGULATORY OR WARNING SIGNS WILL BE MADE BY OTHERS (STATE OR TOWN FORCES) UNLESS OTHERWISE DESIGNATED IN PLANS. PROVIDE A MINIMUM 21 CALENDAR DAY NOTICE TO STATE FORCES BEFORE A ROADWAY IS CLOSED TO TRAFFIC SUCH THAT THE NECESSARY PROVISIONS CAN BE MADE TO INFORM LOCAL EMERGENCY AND LAW ENFORCEMENT PERSONNEL, SCHOOLS OR ANY OTHER PARTIES AFFECTED BY THE ROAD CLOSURE.
2. INSTALL SIGNS BEFORE THE BARRICADES WHEN CLOSING THE ROADWAY TO TRAFFIC. REMOVE BARRICADES BEFORE SIGNS WHEN OPENING THE ROADWAY TO TRAFFIC. INSTALL/REMOVE SIGNS AND BARRICADES WITHIN THE SAME CALENDAR DAY.
3. POSITION WING BARRICADES ON THE SHOULDERS AND SLOPE THE STRIPES DOWNWARD IN THE DIRECTION TOWARD WHICH TRAFFIC MUST TURN ON DETOURING.
4. USE ADDITIONAL TYPE III BARRICADES IN STAGGERED LOCATIONS SUPPLEMENTED WITH SIGN R11-4 "ROAD CLOSED TO THRU TRAFFIC" IN THE EVENT THAT TRAFFIC MUST BE MAINTAINED BEYOND THE DETOUR POINT.
5. SEE ROADWAY STANDARD DRAWING 1101.03, SHEET 1 OF 9, FOR TEMPORARY ROAD CLOSURE.
6. PROPOSED WORK NOT RELATED TO CULVERT CONSTRUCTION TO BE PERFORMED USING LANE OR SHOULDER CLOSURES, IF WARRANTED, PER APPLICABLE STANDARDS.



POSITION TYPE III BARRICADES AS DIRECTED BY THE ENGINEER.

POSITION TYPE III BARRICADES AS DIRECTED BY THE ENGINEER.

INSTALL AT HOG NECK RD (SOUTH) @ WOODVILLE RD

INSTALL AT PATRICK RD @ WOODVILLE RD

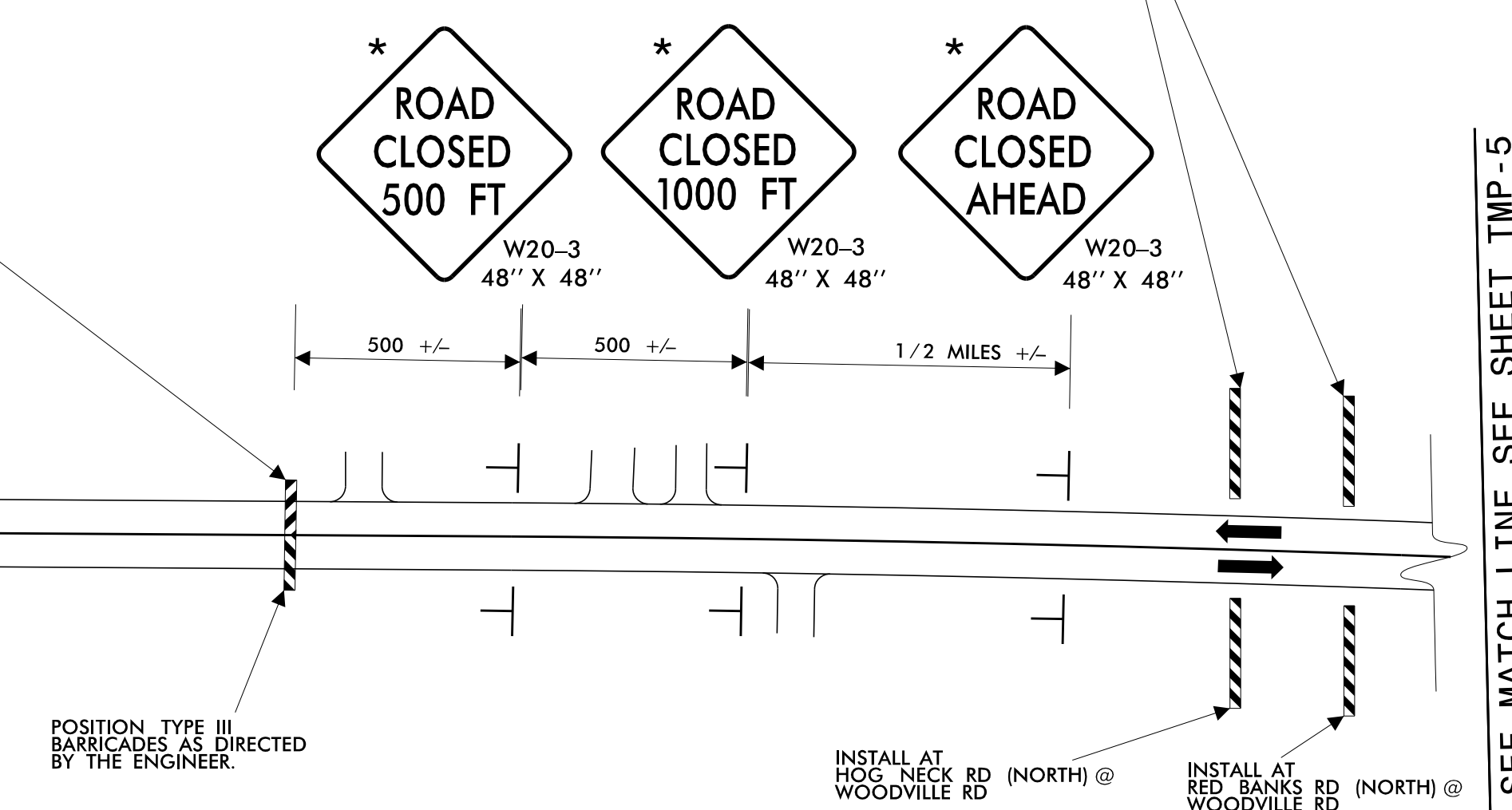
INSTALL AT HOG NECK RD (NORTH) @ WOODVILLE RD

INSTALL AT RED BANKS RD (NORTH) @ WOODVILLE RD

LEGEND

- ➡ DIRECTION OF TRAFFIC FLOW
- ▬ BARRICADE (TYPE III)
- ⊥ STATIONARY SIGN

* SIGNS/DEVICES INSTALLED IN PHASE 1 TO REMAIN AND/OR BE RELOCATED FOR PHASE 2. R11-3 SIGNS ON BARRICADES TO CHANGE ON PHASE 2.



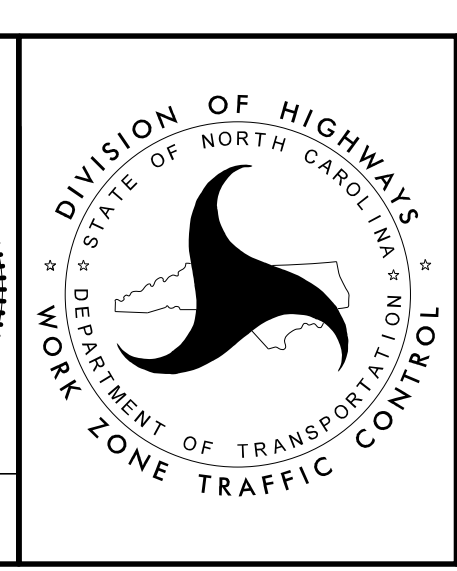
APPROVED: *Mark McAdams*

DATE: 2/13/2020

DocuSigned by:
D14606C110E5428...

SEAL
048167
ENGINEER
MARK D. MCADAMS

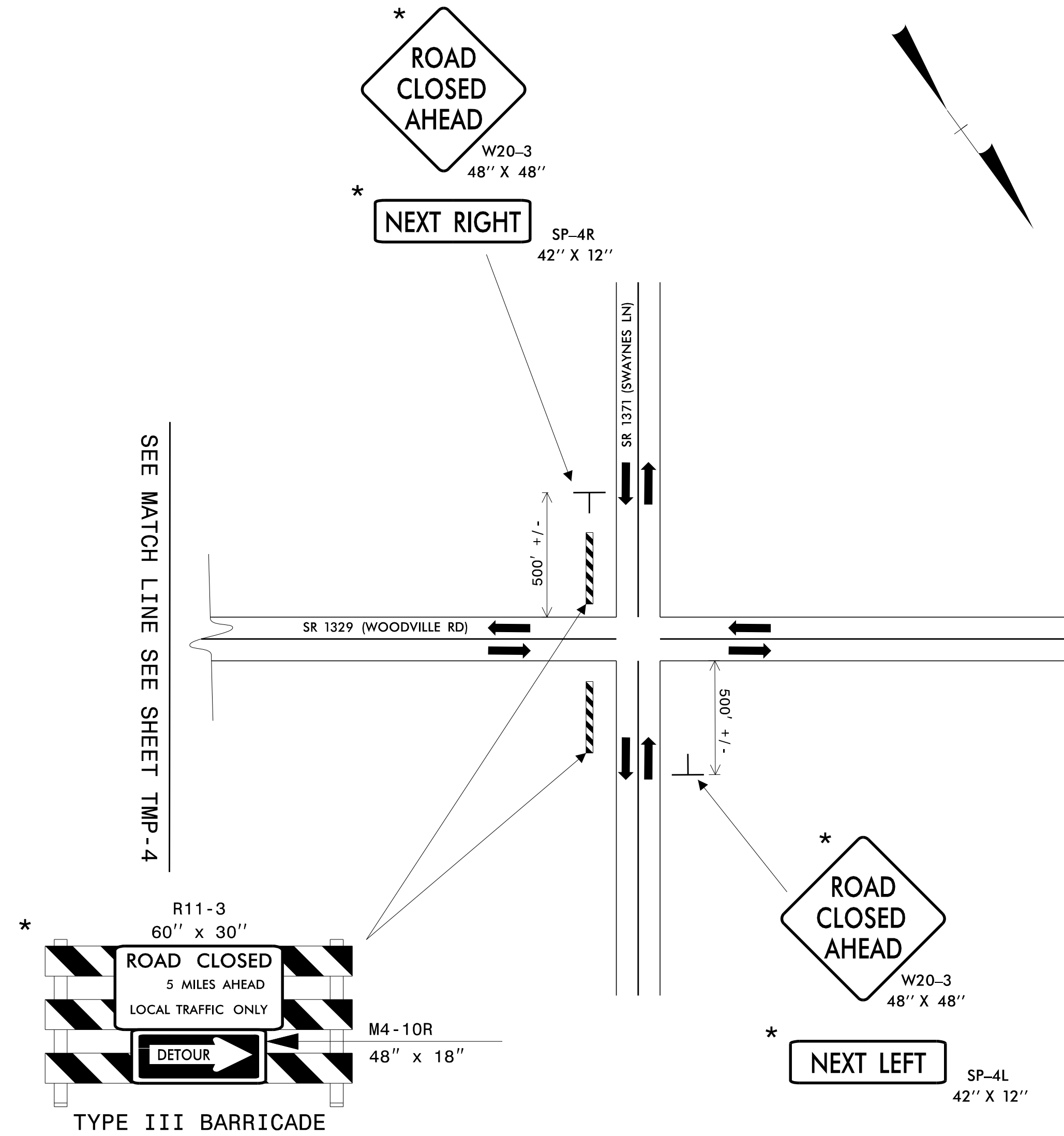
DOCUMENT NOT CONSIDERED FINAL UNLESS ALL SIGNATURES COMPLETED



PHASE 2 ROAD CLOSURE
SR 1329 (WOODVILLE ROAD)

CULVERT STA 132+65.83
TO STA 133+11.41

2/13/2020
G:\Transportation\Roadway\NCDOT\Division01\NR-5740\Traffic\NR5740 TMP.dgn
User:ACEV7019



ROADWAY STANDARD DRAWINGS:

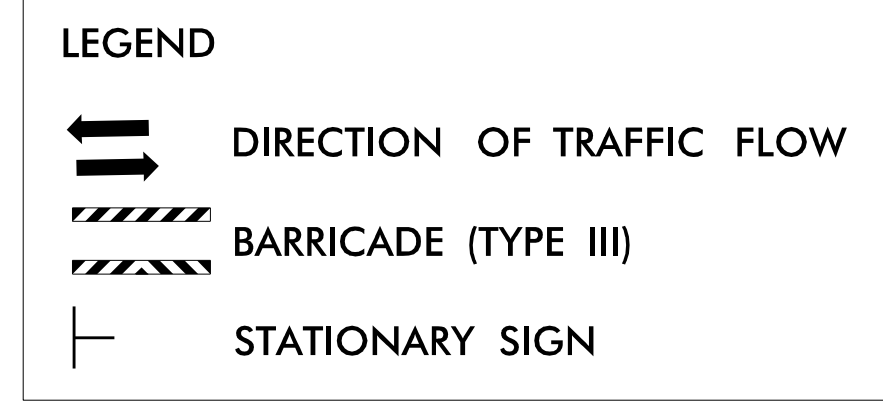
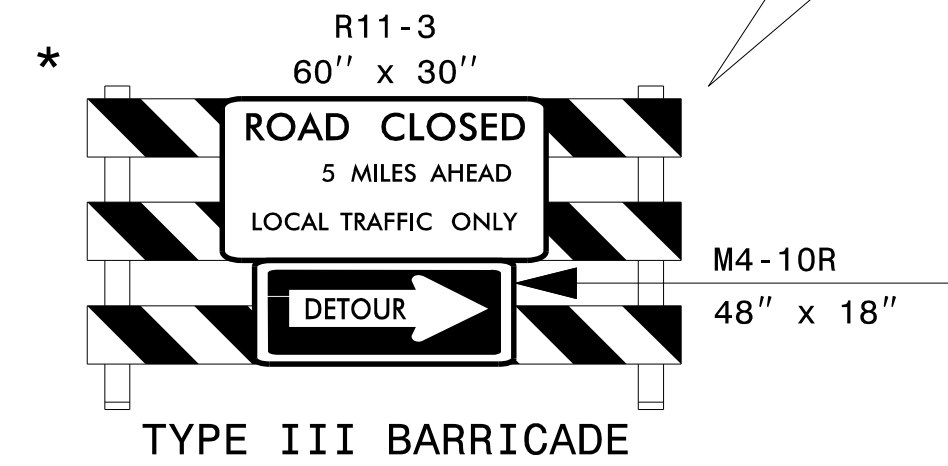
THE FOLLOWING ROADWAY STANDARDS AS SHOWN IN "ROADWAY STANDARD DRAWINGS" - N.C. DEPARTMENT OF TRANSPORTATION - RALEIGH, N.C., DATED JANUARY 2018 ARE APPLICABLE TO THIS PROJECT AND BY REFERENCE HEREBY ARE CONSIDERED A PART OF THESE PLANS:

STD. NO.	TITLE
1101.01	WORK ZONE WARNING SIGNS
1101.02	TEMPORARY LANE CLOSURES
1101.03	TEMPORARY ROAD CLOSURES
1101.04	TEMPORARY SHOULDER CLOSURES
1101.11	TRAFFIC CONTROL DESIGN TABLES
1110.01	STATIONARY WORK ZONE SIGNS
1130.01	DRUMS
1135.01	CONES
1145.01	BARRICADES
1150.01	FLAGGERS
1180.01	SKINNY DRUMS

GENERAL NOTES:

- INSTALLATION OF TEMPORARY ROUTE MARKERS, DESTINATION SIGNS, AND ANY NECESSARY MODIFICATIONS TO EXISTING OR PROPOSED REGULATORY OR WARNING SIGNS WILL BE MADE BY OTHERS (STATE OR TOWN FORCES) UNLESS OTHERWISE DESIGNATED IN PLANS. PROVIDE A MINIMUM 21 CALENDAR DAY NOTICE TO STATE FORCES BEFORE A ROADWAY IS CLOSED TO TRAFFIC SUCH THAT THE NECESSARY PROVISIONS CAN BE MADE TO INFORM LOCAL EMERGENCY AND LAW ENFORCEMENT PERSONNEL, SCHOOLS OR ANY OTHER PARTIES AFFECTED BY THE ROAD CLOSURE.
- INSTALL SIGNS BEFORE THE BARRICADES WHEN CLOSING THE ROADWAY TO TRAFFIC. REMOVE BARRICADES BEFORE SIGNS WHEN OPENING THE ROADWAY TO TRAFFIC. INSTALL/REMOVE SIGNS AND BARRICADES WITHIN THE SAME CALENDAR DAY.
- POSITION WING BARRICADES ON THE SHOULDERS AND SLOPE THE STRIPES DOWNWARD IN THE DIRECTION TOWARD WHICH TRAFFIC MUST TURN ON DETOURING.
- USE ADDITIONAL TYPE III BARRICADES IN STAGGERED LOCATIONS SUPPLEMENTED WITH SIGN R11-4 "ROAD CLOSED TO THRU TRAFFIC" IN THE EVENT THAT TRAFFIC MUST BE MAINTAINED BEYOND THE DETOUR POINT.
- SEE ROADWAY STANDARD DRAWING 1101.03, SHEET 1 OF 9, FOR TEMPORARY ROAD CLOSURE.
- PROPOSED WORK NOT RELATED TO CULVERT CONSTRUCTION TO BE PERFORMED USING LANE OR SHOULDER CLOSURES, IF WARRANTED, PER APPLICABLE STANDARDS.

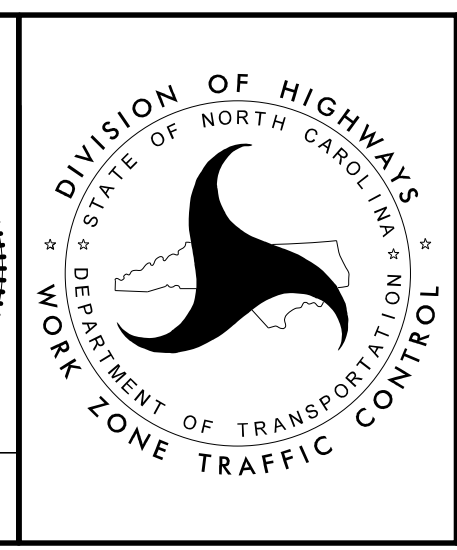
SEE MATCH LINE SEE SHEET TMP-4



* SIGNS/DEVICES INSTALLED IN PHASE 1 TO REMAIN AND/OR BE RELOCATED FOR PHASE 2. R11-3 SIGNS ON BARRICADES TO CHANGE ON PHASE 2.

APPROVED: *Mark McAdams*
D14806C110E5428
 DATE: 2/13/2020

DOCUMENT NOT CONSIDERED FINAL UNLESS ALL SIGNATURES COMPLETED



PHASE 2 ROAD CLOSURE
 SR 1329 (WOODVILLE ROAD)
 CULVERT STA 132+65.83
 TO STA 133+11.41

2/13/2020 6:11 AM C:\transportation\Roadway\NCDOT\Division\NR-5740\Traffic\RS5740 TMP.dgn User:ACEV7019